

The standard model for lead-free soldering

HAKKO **FX-951** **ESD SAFE**
SOLDERING STATION

The standard model for
lead-free soldering upgraded



HAKKO's advanced lead-free soldering model added safe function and upgrading performance.



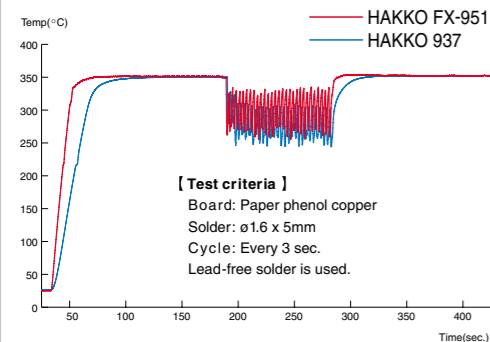
Basic functions

Excellent thermal control

Shows great thermal recovery and thermal accuracy

The composite tip combining heating element and sensor allows great thermal recovery and thermal accuracy.

Thermal recovery graph



User-friendly design

Space-saving vertical design allows more space on the work bench.

The neat and compact design conforms to the work space more easily. Dimensions: 80(W) x 130 (H) x 131 (D) mm

User-friendly iron holder

The angle can be adjusted to suit the individual working style.

The unit can be used with HAKKO 599B instead of a cleaning sponge.

HAKKO 599B
No water is required.

Thermal control function

- The temperature setting can be locked with the control card.
- An alarm can be set to inform reaching the preset lower limit.
- The digital display makes it easier to offset the temperature.

Safe design

- ESD safe by design.
- Various kinds of information by a buzzer or display.

Standard 84 types of tip variations

The standard 84 types of tips are available to suit various kinds of soldering work.

New functions

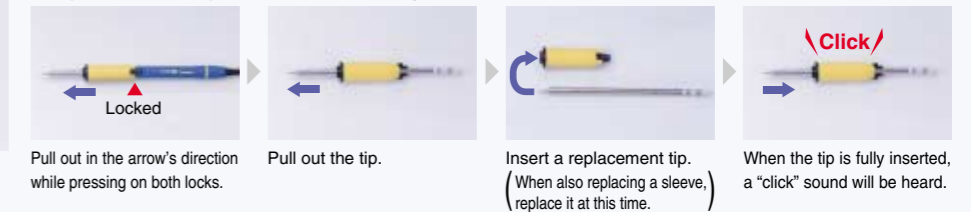
Point 1



Lock-type sleeve

The lock-type sleeve enables it to be firmly secured. When replacing a tip, a clicking sound shows that it is inserted fully.

< Replacement of tip and sleeve assembly >



Pull out in the arrow's direction while pressing on both locks.

Pull out the tip.

Insert a replacement tip. (When also replacing a sleeve, replace it at this time.)

When the tip is fully inserted, a "click" sound will be heard.

Sleeve assembly in 4-color

Yellow, blue, orange and green color sleeve assemblies are available. Workability increases if sleeves are changed according to the tip shape and job application.



Sleeve assembly (Lock-type/antibacterial)
Yellow : No. B3216
Blue : No. B3218
Orange : No. B3217
Green : No. B3219



For storage of tip
Tip tray
No.B2756

Point 2

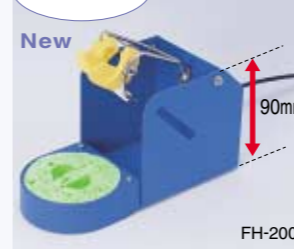


Power-save function performance increased

The power-save function operates while being linked to the iron holder. After the iron is inserted into the iron holder, the sleep function*1 activates for an arbitrarily-set time (0 to 29 min.) and the tip temperature will decrease to 200°C. After 30 minutes have elapsed, the automatic power-off function*2 activates.

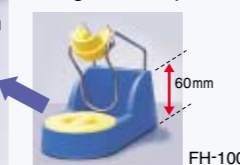
*1 To use sleep function, it is necessary to set the desired time arbitrarily in advance.
*2 In order to use the automatic power shut-off function, it is necessary to set it in advance.

Point 3



Solder-splashing prevention

A higher side plate of the iron holder prevents solder from splashing when placing the tip.



[For customers using the former FX-951 unit]

- In the former FX-951 station, FM-2028/lock-type sleeve can be used. (A new sleeve assembly cannot be used interchangeably.)
- The former FX-951 station cannot be connected to the new iron holder/FH-200.
- A new sleeve assembly is available for the FM-2028 soldering iron only.

Specifications

HAKKO FX-951 soldering station

Power consumption	75W
Temperature range	200 - 450°C
Temperature stability	±5°C

Station

Output	24V
Dimensions	80(W) x 130(H) x 131(D)mm
Weight	1.2kg

HAKKO FM-2028 soldering iron

Power consumption	70W
Tip to ground resistance	< 2
Tip to ground potential	< 2mV
Length of cord	1.2m
Total Length (w/o cord)	188mm with 2.4D tip
Weight (w/o cord)	30g with 2.4D tip

NOTE : The temperature were measured using the HAKKO 191 or FG-100 thermometer.
This product is protected against electrostatic discharge.

Packing List

Station	1
Iron (FM-2028)	1
Power cord	1
Iron holder (FH-200)	1
Control card	1
Connecting cable	1
Heat resistant pad	1

*Tip is an optional part.

Optional Tips

Unit : mm

T12-B SHAPE-B	T12-B2 SHAPE-0.5B	T12-B3 SHAPE-0.7B	T12-B4 SHAPE-0.4B	T12-BL SHAPE-BL	T12-BC1 SHAPE-1BC T12-BCF1 ★
T12-BC2 SHAPE-2BC T12-BCF2 ★	T12-BC3 SHAPE-3BC T12-BCF3 ★	T12-C1 SHAPE-1C	T12-C4 SHAPE-4C T12-CF4 ★	T12-D08 SHAPE-0.8D	T12-D12 SHAPE-1.2D
T12-D16 SHAPE-1.6D	T12-D24 SHAPE-2.4D	T12-D4 SHAPE-4D	T12-D52 SHAPE-5.2D	T12-DL08 SHAPE-0.8DL	T12-DL12 SHAPE-1.2DL
T12-DL32 SHAPE-3.2DL	T12-DL52 SHAPE-5.2DL	T12-I SHAPE-I	T12-IL SHAPE-IL	T12-ILS SHAPE-ILS	T12-J02 SHAPE-0.2J
T12-JL02 SHAPE-0.2JL	T12-JS02 SHAPE-0.2JS	T12-K SHAPE-K	T12-KF SHAPE-KF	T12-KL SHAPE-KL	T12-KR SHAPE-KR
T12-KU SHAPE-KU	T12-1201 QUAD 13.6 x 8.5	T12-1202 QUAD 10.3 x 10.3	T12-1203 QUAD 12.8 x 12.8	T12-1204 QUAD 17.9 x 17.9	T12-1205 QUAD 23.4 x 17.3
T12-1206 QUAD 22.5 x 16.5	T12-1207 QUAD 15.5 x 15.5	T12-1208 QUAD 15.8 x 15.8	T12-1209 QUAD 8.4 x 8.4	T12-1001 TUNNEL 5.1 x 4.6	T12-1002 TUNNEL 5.1 x 10.4
T12-1003 TUNNEL 9.5 x 18.3	T12-1004 TUNNEL 9.5 x 15.8	T12-1005 TUNNEL 9.5 x 13.2	T12-1006 TUNNEL 6.9 x 11.4	T12-1007 TUNNEL 7.9 x 18.8	T12-1008 TUNNEL 19.5 x 10.2
T12-1009 TUNNEL 13.4 x 20.5	T12-1010 TUNNEL 19.5 x 12	T12-1401 SPATULA 10.4	T12-1402 SPATULA 15.7	T12-1403 SPATULA 21.2	T12-1404 SPATULA 25
T12-1405 SPATULA 32	T12-1406 SPATULA 40	T12-BZ SHAPE-B(Z)	T12-B2Z SHAPE-0.5B(Z)	T12-BC1Z SHAPE-1BC(Z) T12-BCF1Z ★	T12-BC2Z SHAPE-2BC(Z) T12-BCF2Z ★
T12-BCM2 SHAPE-2BC Bevel with indent ★★	T12-BC3Z SHAPE-3BC(Z) T12-BCF3Z ★	T12-BCM3 SHAPE-3BC Bevel with indent ★★	T12-C4Z SHAPE-4C(Z) T12-CF4Z ★	T12-D12Z SHAPE-1.2D(Z)	T12-D16Z SHAPE-1.6D(Z)
T12-D24Z SHAPE-2.4D(Z)	T12-D4Z SHAPE-4D(Z)	T12-KFZ SHAPE-KF(Z)	T12-KRZ SHAPE-KR(Z)	T12-WB2 SHAPE-0.5WB	T12-WD08 SHAPE-0.8WD
T12-WD12 SHAPE-1.2WD	T12-WD16 SHAPE-1.6WD	T12-WD52 SHAPE-5.2WD	T12-WI SHAPE-WI		

★ Tinned on the soldering surface only. ★★ The part numbers T12-BCM2 and T12-BCM3 are not available for sale or use in the U.S.A.

Due to continuing product improvement efforts, specifications and external appearance are subject to change without notice.
Copyright Hakko Corporation. All right reserved.

CA00252BbBa001 Oct. 2006

HAKKO
HAKKO CORPORATION
OVERSEAS AFFILIATES

U.S.A.
AMERICAN HAKKO PRODUCTS, INC.
28920 N. AVE. WILLIAMS VALENCIA, CA 91355, U.S.A.
TEL: (661) 294-0090 FAX: (661) 294-0096
Toll Free (800)88-HAKKO
http://www.hakkousa.com

HEAD OFFICE
4-5, SHIOKUSA 2-CHOME, NANIWA-KU, OSAKA, 556-0024 JAPAN
TEL:+81-6-6561-3225 FAX:+81-6-6561-8466
http://www.hakko.com E-mail:sales@hakko.com

HONG KONG
HAKKO DEVELOPMENT CO., LTD.
ROOM 1504, EASTERN HARBOUR CENTRE,
28 HOI CHAK STREET, QUARRY BAY, HONG KONG.
TEL: 2811-5588 FAX: 2590-0217
http://www.hakko.com.hk
E-mail:info@hakko.com.hk

SINGAPORE
HAKKO PRODUCTS PTE., LTD.
1, GENTING LINK #02-04, PERFECT INDUSTRIAL
BUILDING, SINGAPORE 349518
TEL: 6748-2277 FAX: 6744-0033
http://www.hakko.com.sg
E-mail:sales@hakko.com.sg

Please access to the following for the other Sales affiliates.
<http://www.hakko.com>